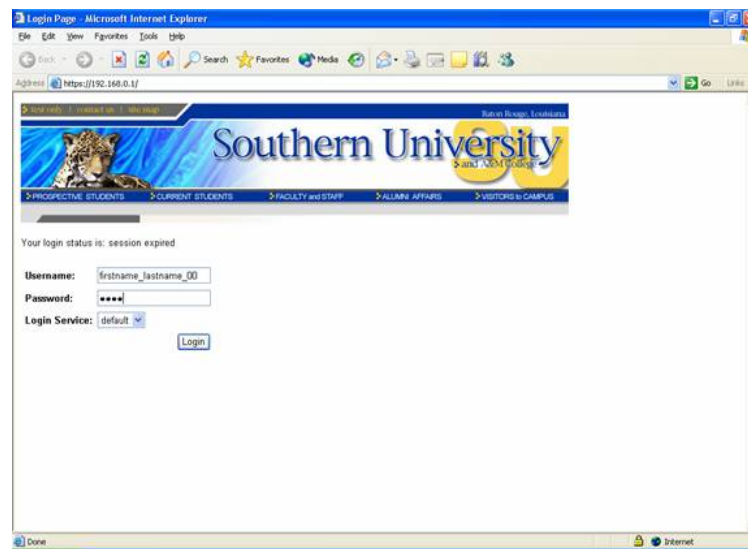




Welcome to Southern University's wireless networking services. Changes have been made on how to access the internet for the wireless network in order to provide better services to the Jaguar Nation. In order to access the internet, there is a different procedure to follow.

Step 1. Click on the Internet Explorer icon located on the desktop screen on your computer.

Step 2. Once have clicked on the icon a screen, as seen below will appear.



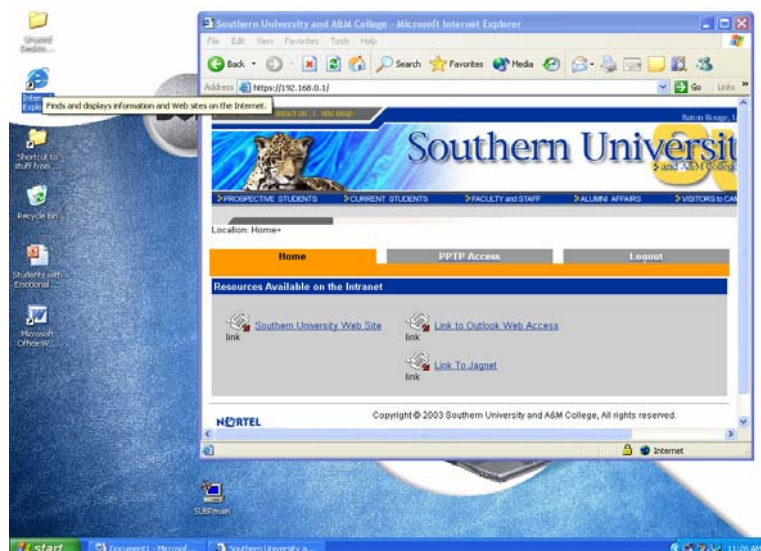
Step 3. You will have to provide your login, this is the same login as your blackboard account and your campus email account. An example of this is (firstname_lastname_00 or 01) in the username box.

Step 4. Type in your password in the password box. For students your password will be the last 4 digits of your SS#. For faculty it is your password for your email. Once you have completed that, click login.

Step 5. Once you have logged on, you will be directed to a confirmation website. The website has four links to secure campus websites.

1. Access the link to the school website.
2. Access the link to campus email.
3. Access the link to Jagnet.
4. Access the link to Blackboard.

* To access websites outside of Southern University, you will have to open a new internet explorer window.



**A user will be automatically logged off if there is no activity with the website within 30 minutes.

If you have any further questions, Please call
The Office of Technology and Network Services at
771-3935 ext. 228