



Clinical Mental Health Counseling is a distinct profession with national standards for education, training and clinical practice. The mission of the Clinical Mental Health Counseling Program is to train competent, culturally aware, ethical prospective counselors who will provide exceptional mental health services in both public and private settings to meet the needs of increasingly diverse communities.

The Program seeks to provide a variety of opportunities in which prospective counselors in preparation will gain knowledge and experience to become academically qualified to become certified, licensed and registered clinical professionals.

JOB OPPORTUNITIES

Clinical Mental Health Counseling can be a very fulfilling career. With a Master's Degree in Clinical Mental Health Counseling, professionals can expect a wide range of career opportunities throughout the nation. In addition, counselors may work in a wide variety of healthcare settings, schools, hospitals, clinics, community agencies, and private practice.



ADMISSION REQUIREMENTS

The prospective student must:

- Have completed a baccalaureate degree from an accredited institution with a GPA of 2.7 or better
- Have a combined GRE score (Verbal and Quantitative) of 281
- Submit three (3) letters of recommendation, accompanied with the Request for Evaluation form in the admissions application
- Submit a Personal Statement of Goals
- Participate in an interview with program faculty

DEGREE REQUIREMENT

The program of study for the Master of Arts in Clinical Mental Health Counseling requires 60 semester hours of academic credit, including 100 clock hours of practicum and 600 hours of internship experiences in a clinical mental health counseling setting. At least 40 clock hours of the clinical experiences in practicum and 240 hours in internship must involve direct service to individuals and groups in a mental health setting.

After successfully fulfilling the required course hours according to the official plan of study, all Master's degree candidates must register and pass the department's comprehensive exam prior to enrollment in Internship in Counseling (COUN 514/515 or COUN 516). The Counselor Preparation Comprehensive Exam (CPCE) will serve as the Departmental Comprehensive examination for the Clinical Mental Health Counseling Program

GRADUATE ASSISTANTSHIPS

The Department offers graduate assistantships for eligible students who show outstanding potential. These competitive assistantships are typically awarded for an academic year and is based on availability of funds.

CONTACT INFORMATION

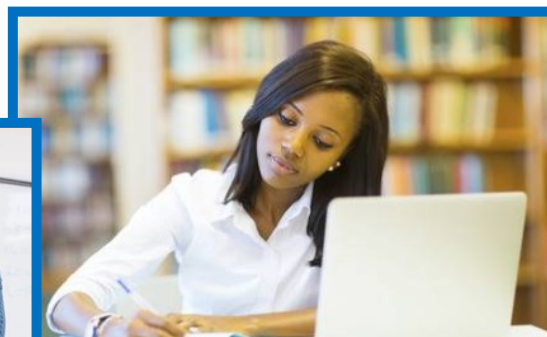
Interim Chairperson

W.W. Stewart Hall (Room 209)

P.O. Box 9983 • Baton Rouge, LA 70813

Phone: 225.771.2890 • Fax: 225.771.229

www.subr.edu/coun-edld



THE GRADUATE SCHOOL