



**SOUTHERN
UNIVERSITY**

AND AGRICULTURAL & MECHANICAL COLLEGE

..... Excellence · Pride · Tradition

WHY SU



**SOUTHERN
UNIVERSITY**
AND AGRICULTURAL & MECHANICAL COLLEGE

DISCOVER
YOU. *subr.edu*

Student Enrollment Services Directory

Office of Admissions & Recruitment
(225) 771-7827

University Bookstore
(225) 771-4330

Campus Counseling Center
(225) 771-2480

Campus Dining Services
(225) 771-2363

Center for Student Success
(225) 771-4312

Center for Teaching and Learning Excellence (CTLE)
(225) 771-4040

Office of International Learning
(225) 771-2613

Office of Financial Aid
(225) 771-2790

Office of Residence Life and Housing
(225) 771-3590

Student Health Center
(225) 771-4770

Student Affairs & Enrollment Management
(225) 771-3922

Office of Student Life
(225) 771-2940

Student Organizations and Campus Involvement
(225) 771-2256

Student Disability Services
(225) 771-3546

Southern University Police Department
(225) 771-2770

Southern University Facts

University Website:

www.subr.edu

SU Athletics Website:

www.gojagsports.com

Institutional Control:

Considered one of the nation's most historical campuses, Southern University includes 512 acres overlooking the beautiful Mississippi River.

Most popular areas of study:

Agriculture
Business
Computer Science
Engineering
Education
Nursing

Student life:

We encourage you to get involved in one of our many on-campus student organizations and service opportunities provided by the Division for Student Affairs & Enrollment Management. Get the most out of your college experience by becoming a Jaguar Ambassador to reach out to the next generation of Jaguars.

Student Organizations:

Number of Organizations: 113
Number of Honor Societies: 33
Number of Social Fraternities: 5
Number of Social Sororities: 4

Keep up with SU on Social Media:

Twitter: @southernu_br

FB: Southern University and A&M College, Baton Rouge

Instagram: @southernu_br

SCHEDULE A TOUR TODAY!
subr.edu/campustours



CAMPUS RESOURCES

Agricultural, Family and Consumer Sciences

Office: (225) 771-4660
Fax: (225) 771-3660

Arts and Humanities

Office: (225) 771-5260
Fax: (225) 771-5860

College of Business

Office: (225) 771-5640
Fax: (225) 771-5262

Biological Sciences

Office: (225) 771-5210
Fax: (225) 771-5386

Chemistry

Office: (225) 771-3990
Fax: (225) 771-3992

Computer Science

Office: (225) 771-2060
Fax: (225) 771-4223

College of Education

Office: (225) 771-2291
Fax: (225) 771-2292

College of Engineering

Office: (225) 771-5290
Fax: (225) 771-5721

Graduate School

Office: (225) 771-5390
Fax: (225) 771-5723

Honors College

Office: (225) 771-4845
Fax: (225) 771-4848

Mathematical Science

Office: (225) 771-5180
Fax: (225) 771-4762

School of Nursing

Office: (225) 771-2653
Fax: (225) 771-2651

Physics

Office: (225) 771-4130
Fax: (225) 771-2310

Rehabilitation and Disability Services

Office: (225) 771-2390
Fax: (225) 771-2293

Sociology

Office: (225) 771-5095
Fax: (225) 771-5675

Speech-Language Pathology

Office: (225) 771-2570
Fax: (225) 771-2651

College of Social and Behavioral Sciences

Office: (225) 771-3092
Fax: (225) 771-3105

Air Force ROTC

Office: (225) 578-4407
Fax: (225) 578-4537

Army ROTC

Office: (225) 771-4160
Fax: (225) 771-5142

Naval Science ROTC

Office: (225) 771-4370
Fax: (225) 771-3604

Center for Service Learning

Office: (225) 771-2613
Fax: (225) 771-2654

Center for Student Success

Office: (225) 771-4312
Fax: (225) 771-4377

Career Services

Office: (225) 771-2200
Fax: (225) 771-5282

Office of Admissions & Recruitment

Office: (225) 771-7827
Fax: (225) 771-4441

Office of the Registrar

Office: (225) 771-5050
Fax: (225) 771-5659

Library Services

Office: (225) 771-4990
Fax: (225) 771-4113

University College

Office: (225) 771-2395
Fax: (225) 771-2371



WHY SOUTHERN UNIVERSITY?

"With my acceptance into Southern University, I continued my family tradition by becoming a part of the Jaguar Nation."

MICAH PEGUES
Beaumont, TX

EXPLORE SEE WHAT THE TALK IS ABOUT

At Southern University and A&M College you will explore opportunities that will enhance your education far beyond the traditional classroom. We have a world class staff that will assist you in building the foundation you need to secure your place in the workforce post graduation. Preparing our students to pursue their dreams is our number one priority.

Southern University graduates are located throughout the nation and around the world. They hold key positions in administration and research at Fortune 500 Companies such as BOEING, CHEVRON, DOW CHEMICAL, EXXONMOBIL, JOHNSON & JOHNSON, IBM, PROCTER & GAMBLE, RAYTHEON, SHELL, and others.

Co-op and intern opportunities take the learning experience beyond the traditional boundaries of the classroom.

**Don't take our word for it; ---
see for yourself.**

We encourage you to experience Southern University for yourself.



WHY SOUTHERN UNIVERSITY?

"The Tradition, Culture and Spirit at Southern University can't be found anywhere else. There is no place I'd rather be obtaining knowledge and growing as a man."

DARRYL HARRIS
Greenville, MS

..... DID YOU KNOW?

For over 30 years, Texas Instruments, Inc. has hired extremely talented students from Engineering, Computer Science and Business from Southern University.

In the last 15 years, TI has donated nearly \$800,000 to the Electrical Engineering department at Southern with a huge emphasis on providing scholarship opportunities for EE students. Texas Instruments' commitment to the success of Southern University students has also been displayed with the Automated Test Engineering (ATE) class sponsored by the company to strengthen the students ability to produce as Test Engineers.



DISCOVER ACADEMICS

What we offer:

Southern University and A&M College offers programs of study ranging from bachelor's degrees to professional and doctoral degrees. Educational opportunities are provided for traditional and non-traditional students offering scholarly interaction among diverse people. The university is committed to a broad program of research, both basic and applied, and creative work to stimulate the faculty and students in a quest for knowledge and to aid society in resolving its scientific, technological, socioeconomic, and cultural issues.

Southern University views diversity as vital to the health of any educational enterprise. To support this philosophy, the university takes affirmative steps to maintain a multicultural faculty, staff, and student body. The diversity is achieved principally through assertive recruitment efforts and through multifaceted international programs.



Why Southern University?

"I chose Southern because the love and tradition is second to none. The atmosphere on campus is amazing and the Nursing program is amongst the top in nation."

TRAVON NABORS
Port Arthur, TX



UNDERGRADUATE ACADEMICS

BEGINNING FRESHMEN LOUISIANA HIGH SCHOOLS

Requirements:

To be fully admitted to Southern University and A&M College, first time freshman that are graduates of a state approved high school must meet the following criteria:

Freshmen students, who graduate from out-of-state schools or those who have been home schooled, must meet one of the following minimum admissions criteria:

Completed High School Core Curriculum and Overall GPA of 2.0

AND

Minimum ACT/SAT English score of 18/450 or ACT/SAT Math score of 19/460

AND

one of the following Core GPA of 2.0 **OR** ACT/SAT Composite of 20/940

✓ Steps to Apply

- Step I.** Complete the Online Application
- Step II.** Submit \$20 Application Fee
- Step III.** Submit Official Transcript(s)
- Step IV.** Submit Official ACT and/or SAT Scores
- Step V.** Submit Senior Class Schedule

OUT-OF-STATE, HOME SCHOOL STUDENTS

Requirements:

Students who do not meet the Louisiana core curriculum requirements, must meet one of the following:

2.0 Overall GPA (4.0 Scale)

ACT: 18 or **19**
English Math

20
Composite Score

SAT: 450 or **460**
Verbal Math

940
Composite Score

*First time freshman from a home school program or with General Equivalency Diploma (GED) must have ACT/SAT composite of 20/1060

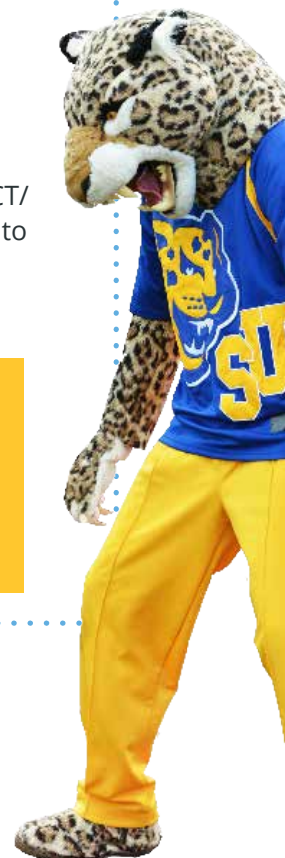
*Home school programs must be state approved

SU HONORS COLLEGE:

Students who complete college preparatory curriculum with a 3.3 GPA or higher and an ACT/SAT score of 23/1060 or above, will be eligible to apply for Honors College admissions.

**YOUR FUTURE IS ONE
CALL AWAY!**
(225) 771-SUBR (7827)

APPLY ONLINE TODAY!
www.subr.edu/admissions





WHY CHOOSE SOUTHERN?

Southern University and A&M College has a rich history of providing students with a high quality academic experience. Southern offers a diverse opportunity for academic, extracurricular and social engagement and development. We understand that providing a safe, positive environment for all students is paramount to their success inside the classroom and beyond.

Working in partnership with faculty and staff across campus, we prepare students to be responsible and contributing members of a diverse, global society by providing learning-centered environments, meaningful out-of-class opportunities, and professional support services that help them learn through experience and achieve academic success. It is our mission to ensure that we are providing the services and support you will need to excel!

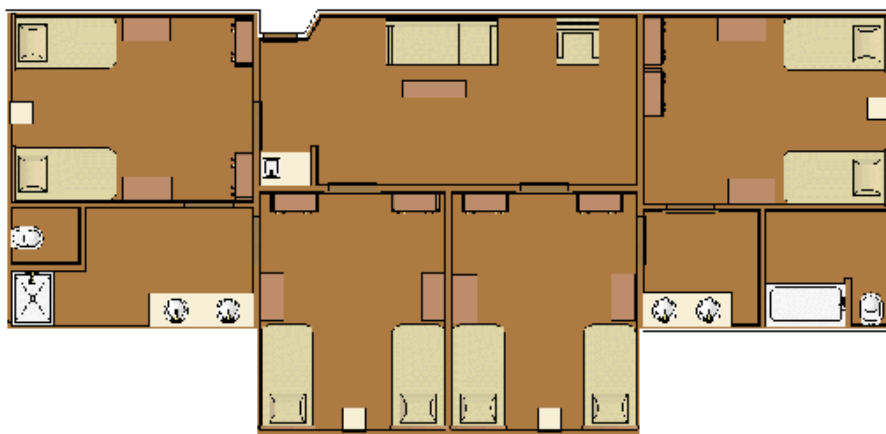




COOL PEOPLE LIVE ON CAMPUS

JOIN THE JAGUAR NATION!!!

As you take the first step into college, be sure to complete your application for housing. Your hall includes a full-service laundry room, lounge areas, and outdoor space to participate in various on-campus programs to fulfill the social needs of every student.



S.V. Totty & U.S. Jones Freshman Residence Hall

Once you are admitted, you will receive a notification via email about housing and your housing assignment.

If you have any questions, please feel free to contact our office. It is our goal to make your transition smooth and simple.

Office of Residential Life & Housing
P.O. Box 9460 Baton Rouge, LA 70813
University Apartments, Building 300
Phone: (225) 771-3590
subr.edu/housing



**SOUTHERN
UNIVERSITY**
AND AGRICULTURAL & MECHANICAL COLLEGE

life on the **BLUFF**

THE PERFECT LOCATION

Southern University and A&M College is located in Baton Rouge, Louisiana and sits on Scott's Bluff overlooking the Mississippi River in the northern section of the city. The campus encompasses 512 acres with an agricultural experimental station on an additional 372-acre site located five miles north of the main campus. The University is a member-school of the Thurgood Marshall College Fund.

LIVE IT UP ON THE YARD

As a Southern University resident student, you will have many opportunities to interact with students, faculty and staff as you learn to think and act as ethical leaders and responsible citizens. You will find that Residential Life staff - your Residence Assistant, Hall Director, or any of us in the central office are here to help you make the most of your SU campus living experience.

GRAB A BITE: FOOD FAVORITES

Mayberry Dining Hall is a Real Food on Campus Branded residential restaurant centrally located on campus. Real Food on Campus means Real food, Real look, Real people, Real results. We utilize the freshest ingredients and move the focus from the back-of-the-house to the front to create the ultimate student dining experience.

Dunn Dining Hall is conveniently located in the heart of the residential community. We offer a wide variety of menu items to satisfy all students' needs.

The Jaguar Express is located in the Smith-Brown Memorial Student Union. "Have it Your Way" at Burger King, "Love That Chicken" from Popeyes, and "Wings and Things." You can even have a home cooked meal from the Home Zone. All locations accept Declining Balance, Visa, Mastercard, and Cash.



about **BATON ROUGE**

LOCATION AND CLIMATE

Baton Rouge, the state capital, is located in Southeast Louisiana, 157 miles north of the Gulf of Mexico and 80 miles WNW of New Orleans via Interstate 10. Baton Rouge is also served by I-12.

Baton Rouge has a semi-tropical climate, perfect for outdoor activities. The weather is consistently warm from May to September and winter is usually mild and short-lived. Spring is glorious with cool nights and warm, sunny days. A light jacket is all that is needed. Fall is mild and only a light sweater is needed in the evenings. Precipitation is reasonably well-distributed and ample throughout the year with an average annual precipitation of 55 inches.

Average Summer
Temperature:

85°F

Average Winter
Temperature:

53°F

Average Annual
Temperature:

66°F

2ND LARGEST
CITY IN
LOUISIANA

900 +
RESTAURANTS



BE APART
OF A RICH **TRADITION**

WHY BATON ROUGE?

Baton Rouge is rapidly moving forward, becoming America's next great city. Through the years, Baton Rouge has been and continues to be shaped by a variety of cultural and environmental influences. Travel down south and experience our cultural traditions seen in our unique attractions, embedded in the lyrics of our Zydeco, Blues and Cajun music, and tasted in our blend of Creole, African-American, French and Spanish cuisine. This city, Louisiana's capital city, is truly the center of Louisiana's cultural excitement.

While visiting, relive our colorful history through our cuisine and architecture, both a blend of Creole and Cajun, topped with Italian, German, Spanish, Caribbean and Greek flavorings.

So, whether your travels bring you to Baton Rouge for leisure or business, take time and enjoy the sights, cuisine and southern hospitality!

Text Courtesy: Visitbr.com

FINANCIAL AID

The Financial Aid staff is dedicated to helping students in pursuit of their educational goals by providing financial information and services in a professional and individualized manner. We are enthusiastic about working with you to complete your financial aid application so that your eligibility can be determined and awards can be offered in a timely manner.

Southern University has worked to make the fundamental right of an education accessible to all people. We believe cost should never be an obstacle to seeking the benefits of higher education. That's why our Financial Aid Office will work hard to make sure you are informed about the many types of aid available to you and guide you through the process of securing financial assistance.

To provide our students with the best possible service, each student is assigned to a specific Financial Aid Advisor based upon his or her last name. Please refer to our Contact Us page to identify your specific advisor. The financial aid staff works in partnership with their assigned students to assist them in applying for and securing the financial resources available to finance their educational expenses, provided the student meets all eligibility requirements.

Learn More:
SUBR.EDU/FINANCIALAID
DEADLINE MARCH 31



**AN AFFORDABLE
CHOICE FOR A GREAT COLLEGE**

EDUC

**CRIMINAL JUSTICE EDUCATION NURSING
ENGINEERING MARKETING SOCIAL WORK**

ESTIMATED COST

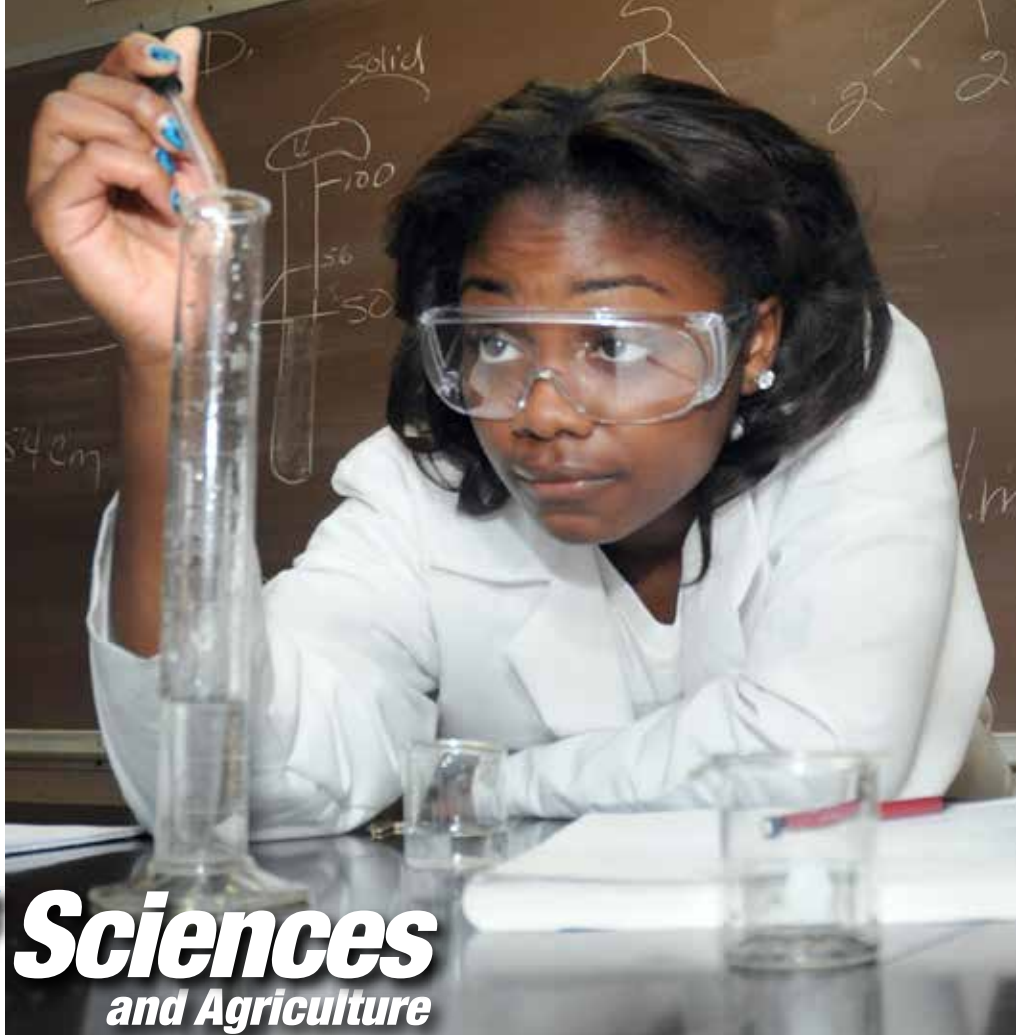
These estimates represent the cost of attendance for one semester of enrollment (12 total hours).

Based on Full-Time Freshmen Enrollment

	Undergraduate In-State Resident	Undergraduate Out-of-State Resident
Tuition:	\$3,673	\$8,348
Residential Housing	\$1,750	\$1,750
Meal Plan	\$1,366	\$1,366
Cable & Internet Fees	\$167	\$167
Mail Box Rental	\$12	\$12
Total per Semester:	\$6,968	\$11,643

ATION

URBAN FORESTY COMPUTER SCIENCE ENGLISH
BUSINESS POLITICAL SCIENCE BIOLOGY



College of Sciences *and Agriculture*

Undergraduate Programs (B.S.)

- Family and Consumer Sciences
- Agricultural Sciences
- Urban Forestry
- Biological Sciences
- Chemistry
- Mathematics & Physics

Graduate Programs (M.S.)

- Urban Forestry
- Biological Sciences
- Mathematics/Physics

Doctorate Programs (Ph.D.)

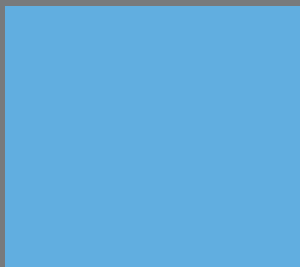
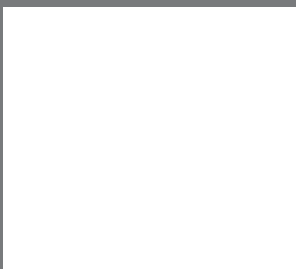
- Environmental Toxicology
- Urban Forestry
- Science/Math Education

* Both Chemistry and Biology have Pre-Med options. Chemistry offers a dual degree in chemical engineering in partnership with other Louisiana Institutions.

Our Commitment:

The College of Sciences and Agriculture seeks to improve the scientific literacy of all students enrolled at the university. The college provides a liberal education in the sciences through course offerings to majors and non-majors. The biological sciences, chemistry, mathematics, physics departments offer baccalaureate degree programs that prepare students for careers in the pure and applied sciences.





DID YOU KNOW?

SU scientists have conducted research that has become useful in the study of outerspace, the preservation of food, protection of trees, soil, water, and high-speed information networks.

This university program also prepares students for professional careers in food, fiber, natural resources, family and consumer sciences, and agricultural sciences uses innovative strategies, up-to-date technologies, and current information.

Southern University provides students with the fundamentals underlying their chosen disciplines, practical application and solutions to discipline-related problems, and opportunities to transfer knowledge to others in a variety of formal and informal settings.

Our research programs address problems that hold promise for enhancing agricultural productivity and profitability while protecting the environment. At Southern University we understand that research is valuable for improving the quality of life and well-being for the people of Louisiana and society in general.



**PRODUCING
INNOVATIVE
LEADERS
OF THE FUTURE**

A photograph of the College of Business building at Southern University. The building is a two-story structure with a central brick tower and large glass windows. There are wide concrete stairs leading up to the entrance on both sides. In front of the building is a landscaped area with green bushes and pink flowers. A small plaque with the letters 'BU' is visible in the center of the flower bed.

College of Business

Since its inception in 1937, the College of Business has evolved into one of the largest senior colleges at Southern University

Undergraduate Programs (B.S.)

- Accounting
- Finance
- Business Management
- Marketing

Graduate Programs (MBA)

- Business Administration

Our Commitment:


The College of Business is committed to providing outreach activities for pre-college students to develop an awareness of the benefits of higher education and business careers. In a rapidly changing world environment, success does not come by chance. Our courses of study deliver the skills needed by emerging business leaders. The college is accredited by AACSB-International, and maintains high standards of teaching, research and services. Admission to the College of Business is open to students who have successfully completed the following requirements:

Requirements for Degree Program

Attained at least a 2.0 grade point average on a minimum of 30 semester hours of college credit courses, which must include the following:

- A.** Freshman Composition (ENGL110 and ENGL111), 6 hours
- B.** College Algebra (MATH135) and Calculus for Business and Social Sciences (MATH1203) with a grade "C" or better, 6 hours
- C.** Computer Science (CMPS291) with a grade of "C" or better, 3 hours
- D.** Natural Sciences, 6 hours





"My experience at Southern University, as a Mechanical Engineering major has been one for the books! All of the all-nighters, early mornings, seemingly unbearable workloads, and incredibly tough classes, have made me realize that nothing earned comes easy. I learned that no goal can be accomplished without sacrifice, perseverance, dedication, and diligence."

- Anngelica Taylor

College of Engineering and Computer Science

Undergraduate Programs (B.S.)

- Civil Engineering
- Electrical Engineering
- Mechanical Engineering
- Computer Science
- Electronics Engineering Technology
- Computer Science Information Systems

Graduate Programs (M.S.)

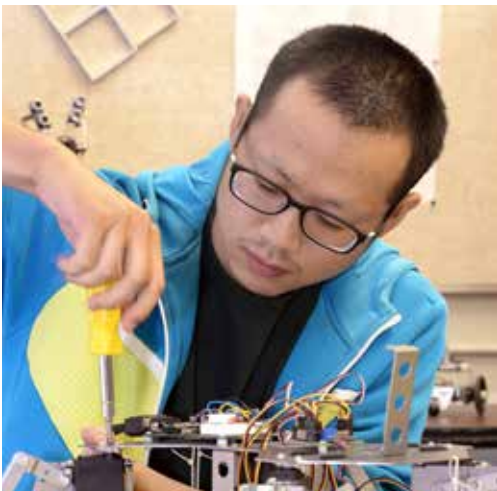
- Engineering
- Computer Science Information Systems

The Southern University College of Engineering and Computer Science nationally ranked as a producer of highly-skilled professionals who go on to work for major companies all across the nation.

Our Commitment:

The College of Engineering and Computer Science provides students with technological skills and opportunities that stimulate professional, educational, and personal growth. Students are challenged by a diverse faculty and staff committed to teaching, research, and service. Students are encouraged to participate in laboratory research and cooperative education programs that enhance career success. Our students are driven to participate in research with faculty members that may create innovations in engineering. The college maintains a competitive atmosphere that enhances the student ability to achieve the optimum learning experience.

For admission requirements or more information call:
(225) 771-5290





College of Nursing and Allied Health

VOTED
2015 NURSING SCHOOL
OF THE YEAR

- Louisiana State Nurses Association

Southern University's College of Nursing and Allied Health was awarded the "2015 Best Nursing Program" among historically black universities and colleges.

Undergraduate Programs

- Nursing (BSN)
- Rehabilitation Services
- Therapeutic Recreation and Leisure Studies (B.S.)
- Speech Pathology and Audiology

Graduate Programs (MSN)

- Family Nurse
- Rehabilitation Counseling
- Speech Pathology and Audiology

Doctorate Programs (Ph.D.)

- Nursing



Our Commitment:

The undergraduate and graduate programs at Southern University has been approved by the Louisiana State Board of Nursing and accredited by the Commission on Collegiate Nursing Education. The Bachelor of Science in Nursing (BSN) program and the Masters of Science in Nursing (MSN) are accredited by the Commission on Collegiate Nursing Education (CCNE).

There has never been a better time to be a nurse. According to Johnson & Johnson, by the year 2020 there will be an estimated shortage of 800,000 nurses. Our BSN program is nationally recognized for its success with minority students and the school has graduated over 2000 BSN Nurses since 1988.



College of Education *Arts and Humanities*

Undergraduate Programs

- Elementary Education Grades 1-5 (B.S.)
- Elementary Education Intergrated and Special Education M/MOD Grades 1-5 (B.S.)
- Middle Grades Education and Special Education (B.S.) M/MOD Grades 4-8 (B.S.)
- English (B.A.)
- History (B.A.)
- Interdisciplinary Studies (BIS)
- Mass Communications (B.A.)
- Music (B.A.)
- Fine & Applied Arts (B.A.)
- Foreign Language (B.A.)

Graduate Programs

- Counselor Education
- Educational Leadership
- Mental Health Counseling
- Music
- Special Education

The College of Education, Arts and Humanities (CoEAH) develops professionals who think critically and use best practices in diverse environments.

Our Commitment:

The College of Education, Arts and Humanities (CoEAH) develops professionals who think critically and use best practices in diverse educational and clinical environments. CoEAH is committed to preparing students to become critically aware of political, social, economic, and educational institutions, and instilling within students the basic concepts of justice, truth, beauty; an orderly process of thinking; and a hierarchy of values.





College of Social and Behavioral Sciences

Undergraduate Programs

- Criminal Justice (B.S.)
- Psychology (B.S.)
- Social Work (B.S.)
- Sociology (B.S.)
- Political Science (B.A.)
- Pre-Law Curriculum (B.A.)

Graduate Programs

- Criminal Justice (M.S.)
- Public Administration (MPA)
- Social Science (M.A.) - *History, Political Science, Sociology*

Doctorate Programs (Ph.D.)

- Public Policy

» **RESEARCH**
» **INSPIRE**
» **SHARE**
» **ADVANCE**

Our Commitment:

The College of Social and Behavioral Sciences' mission is to advance research on societal issues. Inspire new generations of scholars to seek solutions through undergraduate and graduate studies, and share those solutions with the community through education. Our commitment is to promote academic excellence through counseling and scholarly activities that encompass courses of study that provide the foundation necessary for graduate work, professional training and advancement.



DID YOU KNOW?

Southern is also known for having one of the most celebrated athletic programs in the Southwestern Athletic Conference (SWAC); Many of Southern's athletes go on to play professionally.



Southern University Jaguars (NCAA Division I)

Fall

Football (M)
Soccer (W)
Volleyball (W)
Tennis (W)

Winter

Basketball (M/W)
Bowling (W)
Track, Indoor (M/W)

Spring

Baseball (M)
Combined Cross Country (M)
Softball (W)
Tennis (W)
Track, Outdoor (M/W)



Teams compete in the Southwestern Athletic Conference in all sports. SU also offers a wide range of intramural sports. Scan the QR Code to visit gojagsports.com, the official home of Southern University Jaguar Athletics.

Why Choose

OUR COMMITMENT.

Since its establishment in 1880,
Southern University and A&M College has
maintained a tradition of ***excellence***
and continues to thrive as it sustains its rich
history.

Southern University?

Southern University and A&M College is a comprehensive institution offering four-year, graduate, professional, and doctorate degree programs, fully accredited by the Southern Association of Colleges and Schools (SACS). Today, the university is part of the only historically black Land Grant University system in the United States.

Southern University and A&M College was founded in 1880 in New Orleans. Southern University undergraduates, from more than 40 states and 30 countries, are structuring their careers at the university's Baton Rouge, Louisiana campus.

The University's doors opened to 12 students in New Orleans more than 120 years ago. It was some 20 years later that our founders moved the campus to a "new" Southern University along the Mississippi River in Baton Rouge. They certainly didn't imagine that the institution would evolve into today's fast-paced, global community, yet, a formula that would provide opportunities for centuries to come was developed. The founders understood the importance of education in developing careers, in social living, in public service, and for each individual's personal self-worth.

In the 21st century, Southern University continues to attract energetic minds from many parts of the globe. There is global representation among our graduates, among which are the young professionals like the rising engineering and business executives, music producers, and women in physics.

Competitive opportunities are our answer to a new century's standards in education. It is our mission to guide you and others from many different backgrounds into studies that will hold up to challenges you'll find in an ever increasing complex and technical world.



WHY SOUTHERN UNIVERSITY?

"When it came to pursuing a higher education, I knew I wanted to attend a HBCU, particularly Southern. I fell in love with its deeply rooted history, and rich culture. That alone influenced my decision."

KAYLA PITTMAN
Bogalusa, LA



**Office of Admissions
and Recruitment**

P.O. Box 9231
Baton Rouge, Louisiana 70813
Phone: (225) 771-SUBR (7827)
Fax: (225) 771-4441
E-mail: admissions@subr.edu
www.subr.edu

#WEARESOUTHERN