

where Academics, Research &
Business Partnering
yield infinite opportunities

Promoting The Research Enterprise *at*
Southern University and A&M College

A REDESIGN STRATEGY

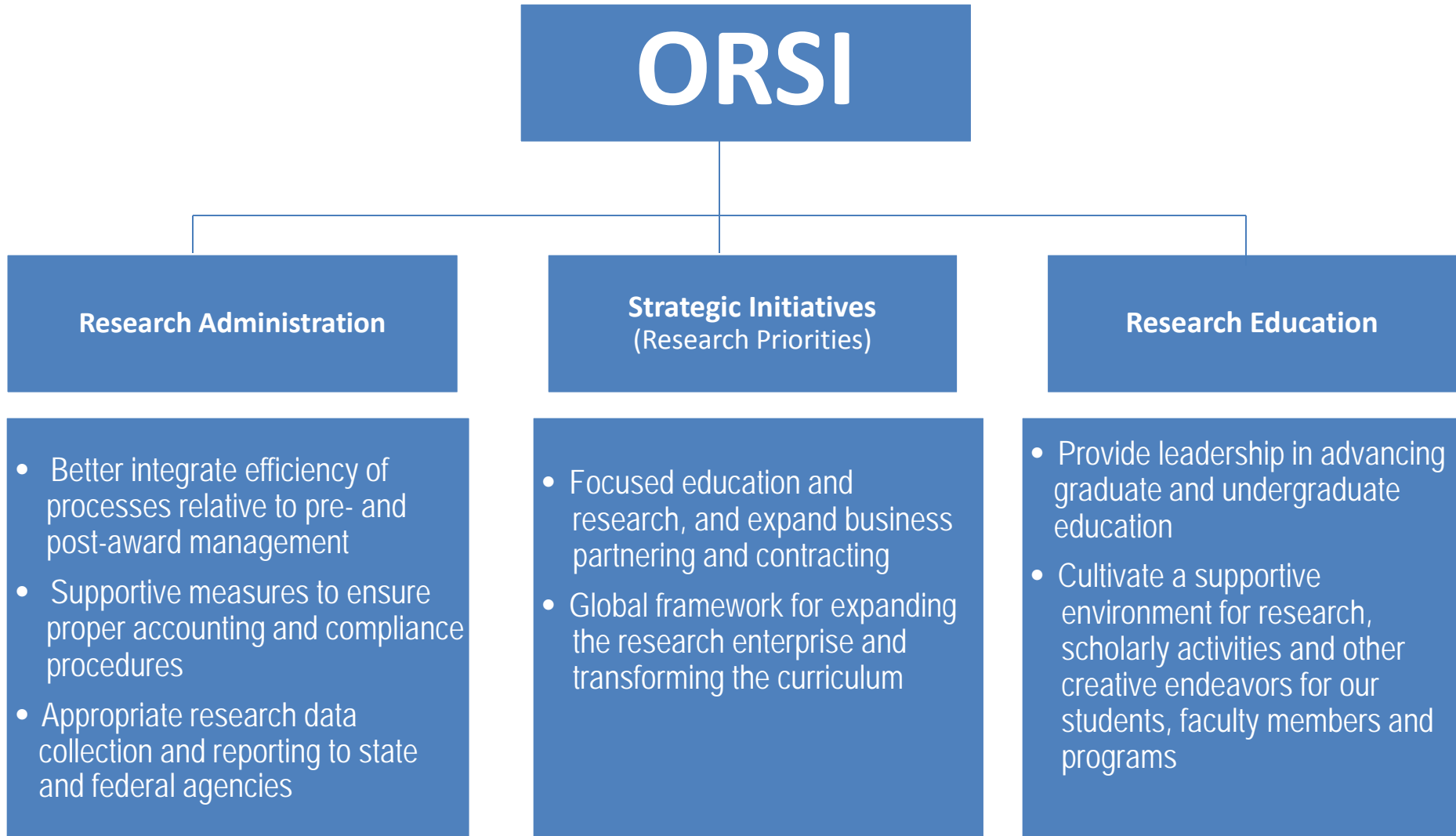


SOUTHERN UNIVERSITY OFFICE OF RESEARCH AND STRATEGIC INITIATIVES

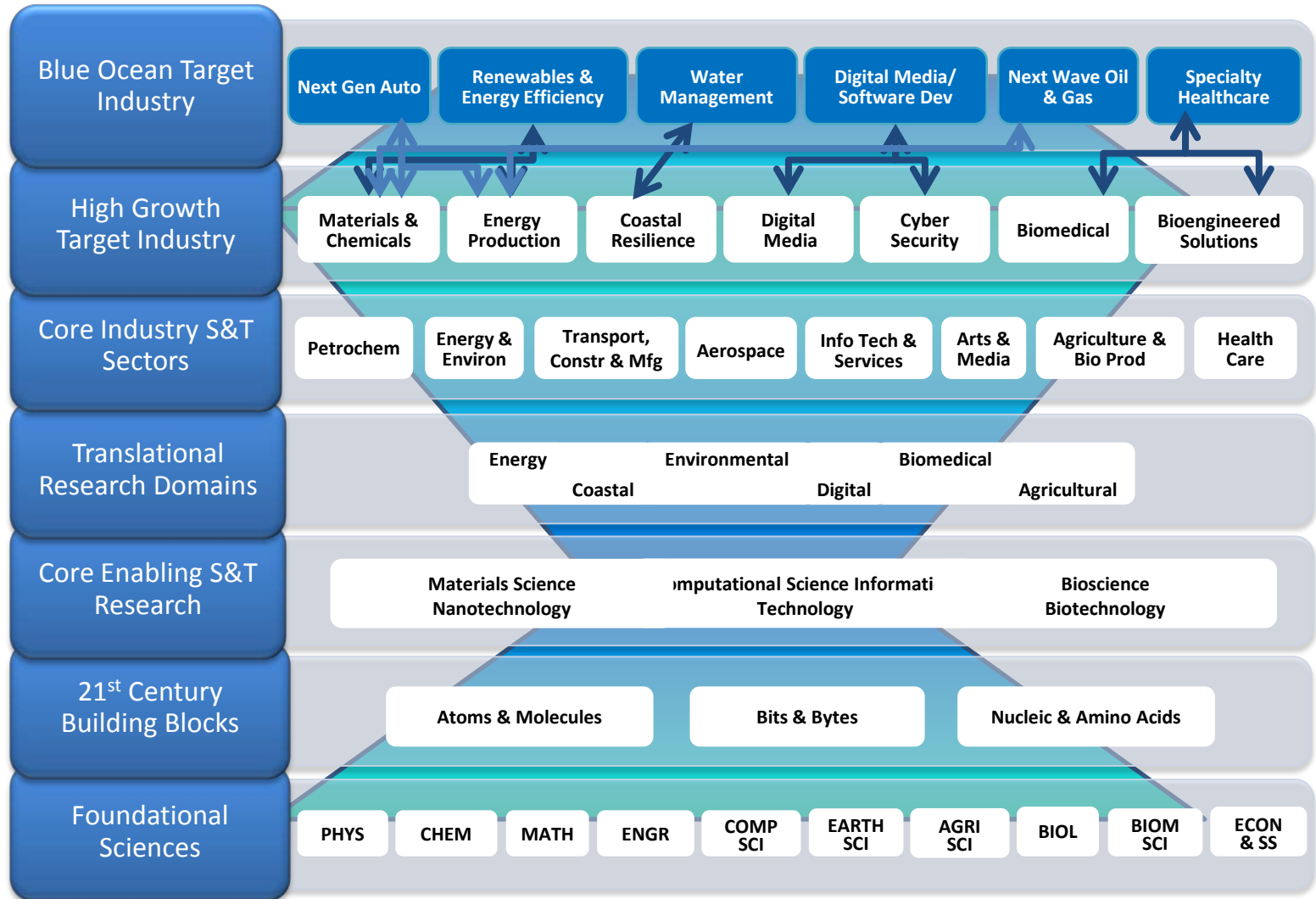
WHY REDESIGN RESEARCH?

- **Better Alignment of Research Strengths (Core and Emerging) with Academic Restructuring**
- **Better Integration of Research Administration, Academics, and Research Education with overall objectives that promotes**
 - Greater efficiency, diverse revenue generation
 - Enhanced student experiential and faculty engagement opportunities
 - Significant business partnering opportunities and community outreach
- **Louisiana Board of Regents' Research Master Plan Requirements**
 - Identification and Definition of top priority research areas
 - Campus and External Support for Priority Research Areas
 - Priority Research Area Data.

The NEW... ORSI ReDesign Strategy



BOR: Louisiana FIRST PLAN





Conceptual Design



SUSTAINABILITY

Research Priorities and Cross Cutting Research Areas

Cross Cutting Engagement: Small Business Development & Emerging Technologies, International Engagement, Cyber Infrastructure & Collaborative Environments

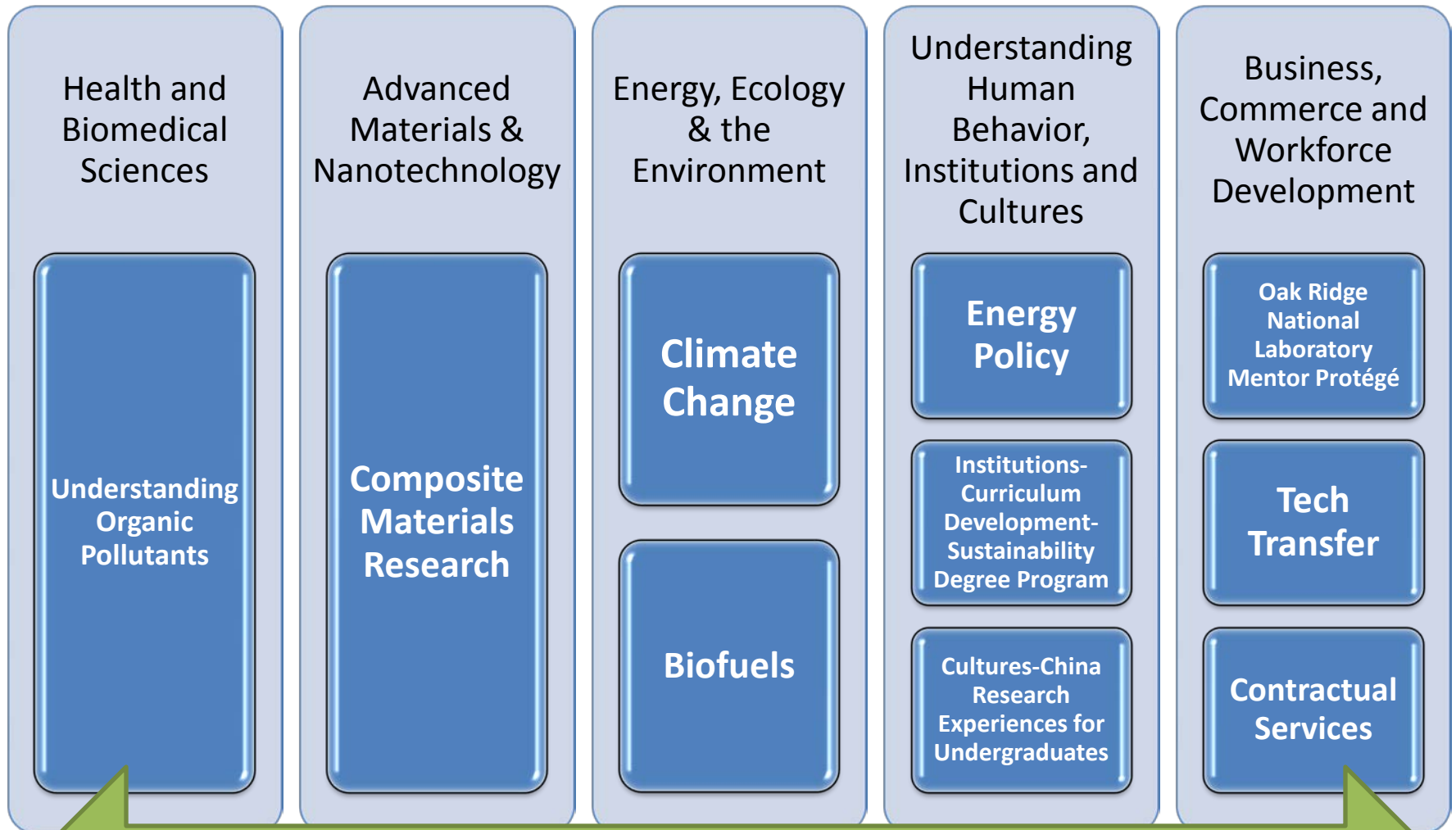


Academic Colleges



HBCU-Up: ACE

The New Energy Workforce: Sustainable Materials, Energy and Technology Research Priorities



Cross-Cutting Engagement: International Engagement-Research Collaboration with China and West Africa; Cyber Infrastructure & Collaborative Environments-Data Sharing with LONI